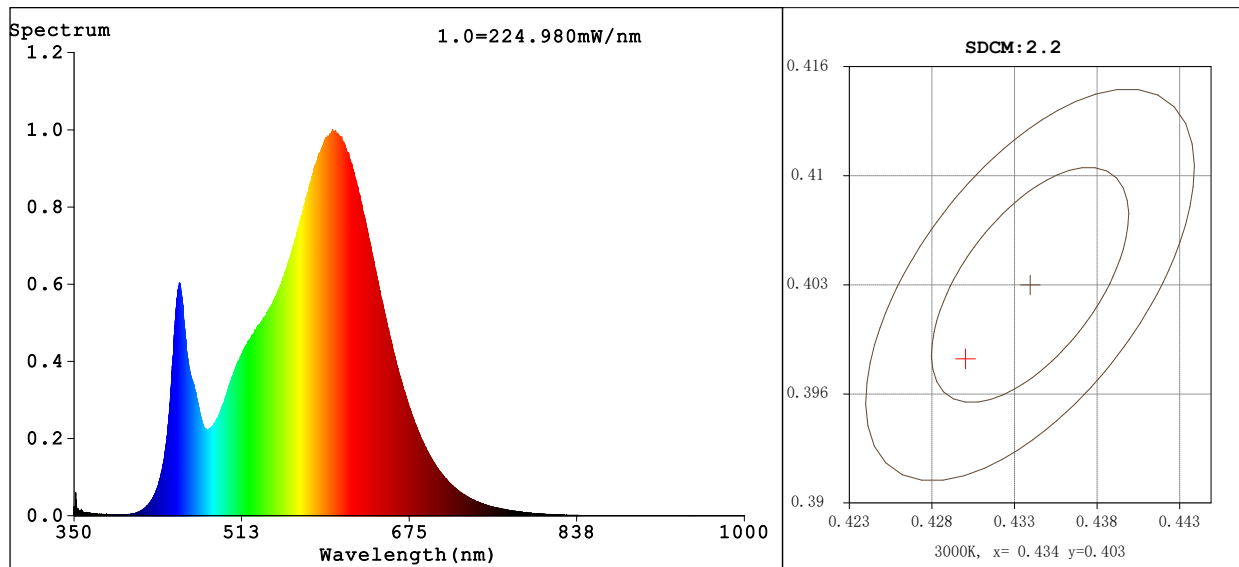


Spectrum Test Report**Color Parameters:**

Chromaticity Coordinate: $x=0.4299$ $y=0.3985$ $u'=0.2484$ $v'=0.5181$
CCT=3076K (Duv=-0.0012) Dominant WL:Ld =583.0nm WL:Lc = --nm Purity=48.6%
Ratio:R=22.5% G=74.6% B=2.9% Peak WL:Lp=600.7nm FWHM=123.4nm
Render Index:Ra=82.1 AvgR=76.6 TM30:Rf=84 Rg=95

R1 =81 R2 =92 R3 =94 R4 =79 R5 =81 R6 =90 R7 =81
R8 =57 R9 =3 R10=82 R11=79 R12=73 R13=84 R14=98 R15=73

Photo Parameters:

Flux = 10897 lm Eff. : 136.85 lm/W Fe = 33.31 W
Scotopic:15207 S/P:1.3956

Electrical parameters:

V = 231.23 V I = 0.3522 A P = 79.62 W PF = 0.9777
LEVEL:OUT WHITE:ANSI_3000K
Status: Integral T = 36 ms Ip = 50595 (77%)

GBT5702

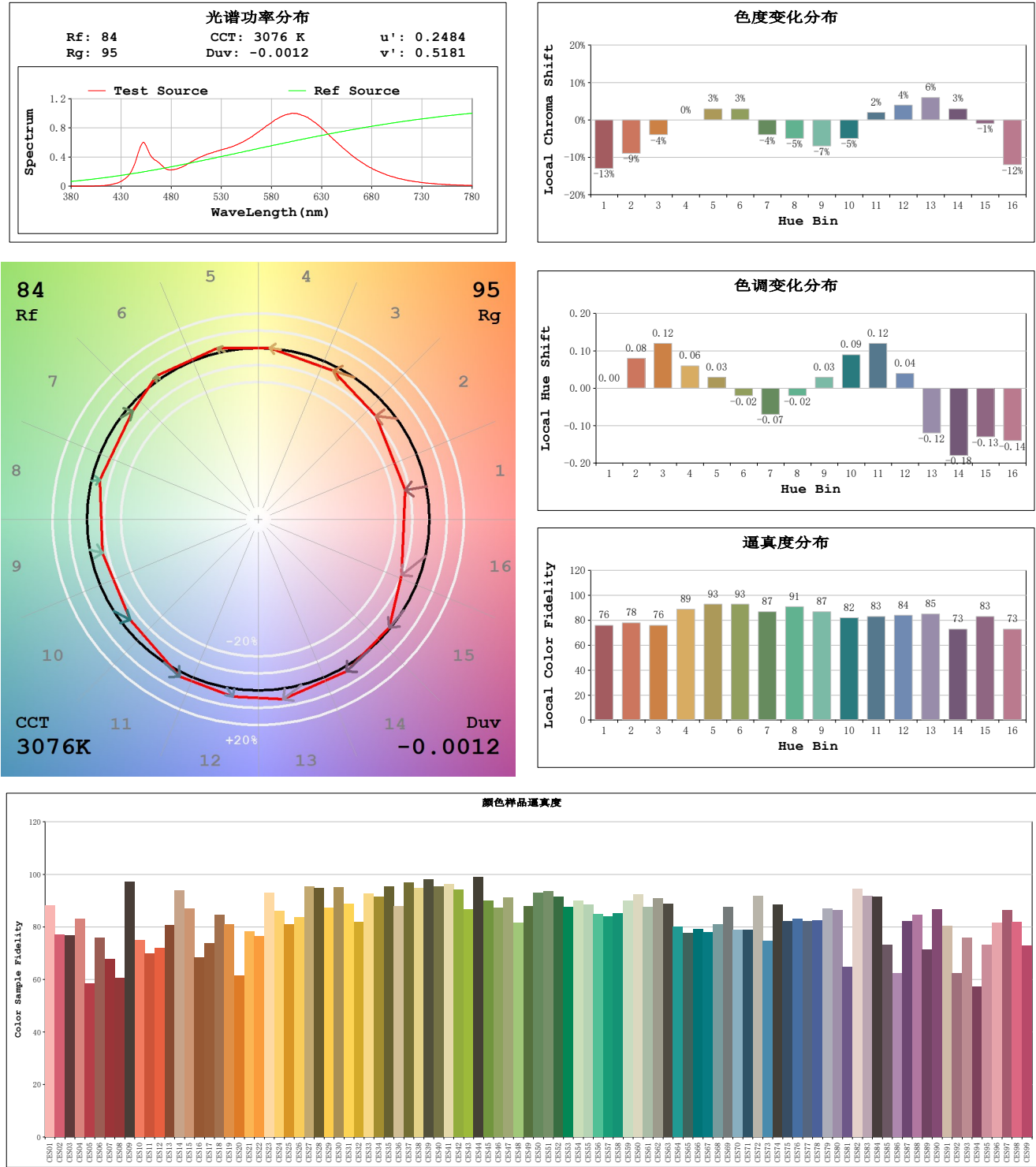
Ra = 80 Ga = 0.92

Model:
Tester:
Temperature:25.3Deg
Manufacturer:

Number:3
Date:2025-04-23 09:13:11
Humidity:65.0%
Remarks:

TM30

视场角:2 度



Model:
Tester:
Temperature:25.3Deg
Manufacturer:

Number:3
Date:2025-04-23 09:13:11
Humidity:65.0%
Remarks: